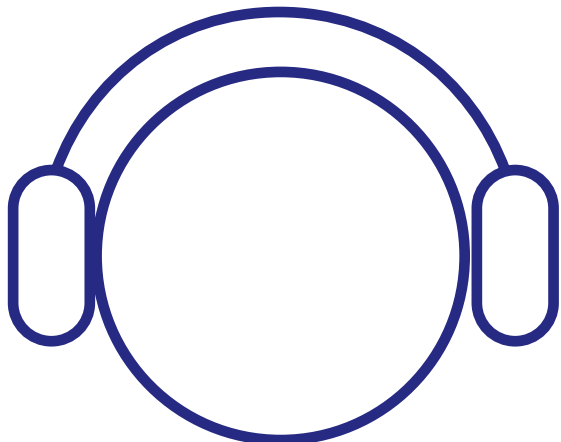
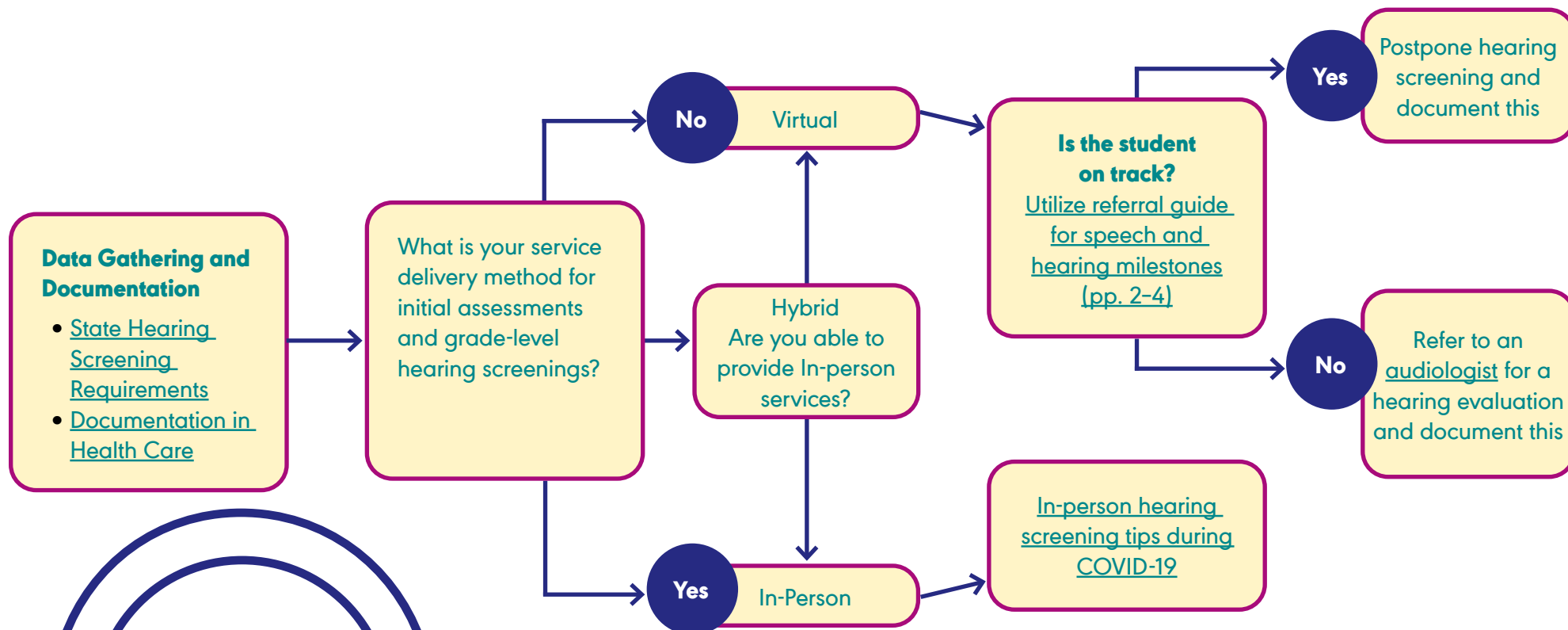


Decision Helper for Hearing Screening By Speech-Language Pathologists During COVID-19



Referral Guide: Ages Three to Four Years

QUESTION	Yes	No
1. Is there a history of childhood hearing loss in the family?		
2. Does your child have frequent ear infections?		
3. Does your child respond when you call them from another room?		
4. Does your child understand words for some colors like red, blue, and green?		
5. Does your child understand words for some shapes, like circle and square?		
6. Does your child understand words for family like brother, grandmother, and aunt?		

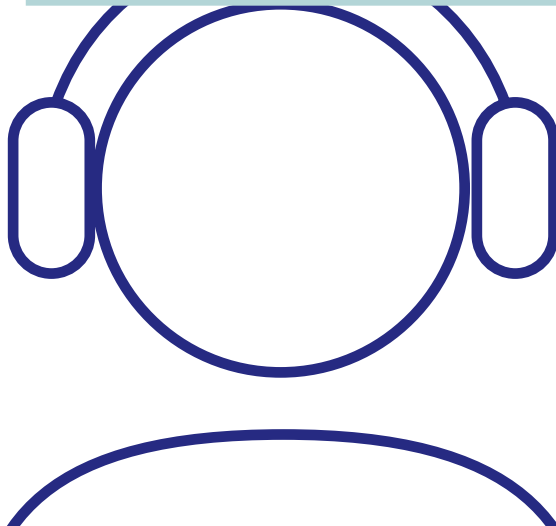
REFERRAL GUIDE

Yes to #1 → Refer to audiologist

Yes to #2 → for a comprehensive hearing evaluation.

> 2 "No" answers for Questions #3-6 →

< 2 "No" answers for Questions #3-6 → Postpone hearing screening until in-person hearing screening is available, and document reasoning.





Referral Guide: Ages Four to Five Years

QUESTION	Yes	No
1. Is there a history of childhood hearing loss in the family?		
2. Does your child have frequent ear infections?		
3. Does your child understand words for order like first, next, and last?		
4. Does your child understand words for time like yesterday, today, and tomorrow?		
5. Does your child follow multi-step directions, like "Put your pajamas on, brush your teeth, and pick out a book"?		
6. Does your child follow spoken classroom directions, like "Draw a circle on your paper around something you eat"?		
7. Does your child understand most of what they hear at home?		
8. Does your child understand most of what they hear at school?		

REFERRAL GUIDE

Yes to #1 → Refer to audiologist
Yes to #2 → for a comprehensive hearing evaluation.
> 2 "No" answers for Questions #3-8 →

< 2 "No" answers for Questions #3-8 → Postpone hearing screening until in-person hearing screening is available, and document reasoning.



Referral Guide: Ages Five and Older

QUESTION	Yes	No
1. Is there a history of childhood hearing loss in the family?		
2. Does your child have frequent ear infections?		
3. Does your child regularly ask for repetition of what was said?		
4. Does your child turn up or ask that the television volume be turned up louder as compared with others in the family?		
5. Does your child respond to their name immediately? Or do you need to call your child's name multiple times before they respond?		
6. Does your child respond to a conversation or question with an unrelated topic or answer?		
7. Does your child participate actively in conversations with friends and family?		
8. Does your child speak in a loud volume even in quiet environments?		
9. Does your child have difficulty keeping up with conversations in the classroom?		
10. Does your child have difficulty responding to questions when they are unable to see the speaker's face?		

REFERRAL GUIDE

Yes to #1 → Refer to audiologist
Yes to #2 → for a comprehensive hearing evaluation.
> 3 "Yes" answers for Questions #3-10 →

< 3 "Yes" answers for Questions #3-10 → Postpone hearing screening until in-person hearing screening is available, and document reasoning.